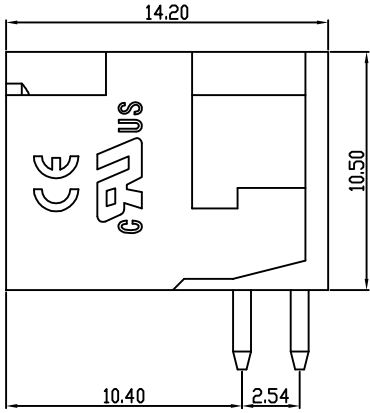
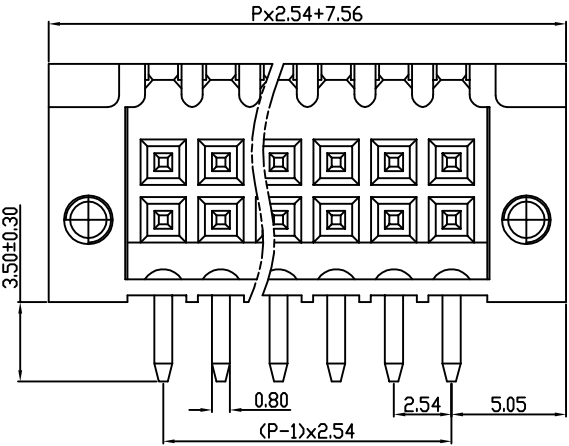
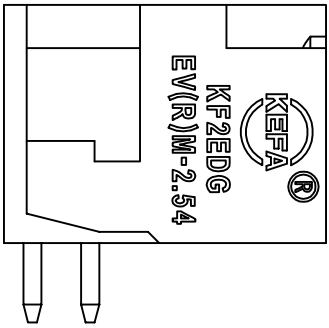
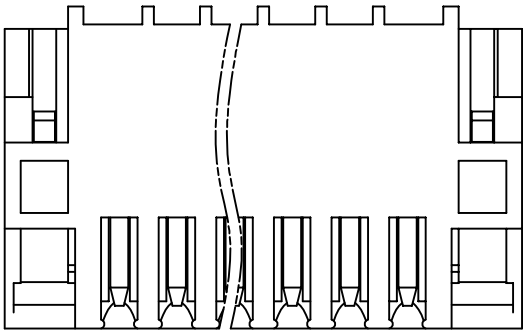
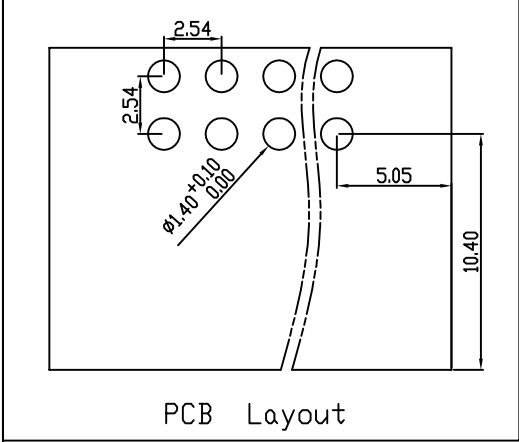


linear dimension(Tolerances Standard GB/T 14486-2008)								—		
variable range	to	over 6	over 10	over 30	over 60	over 100	over 160	to	over 10	over 100
	6	to 10	to 30	to 60	to 100	to 160	to 10	to 100	to	
tolerance	±0.20	±0.30	±0.50	±0.70	±1.00	±1.30	±1.60	0.10	0.30	0.60

REVISION RECORD				
REV.	DESCRIPTION	ECN No.	APPROVED	DATE
A	新发行		CLF	21.11.15



UL/CUL 技术参数 UL/CUL Technical Data							
等级	Use Group	B	C	D			
额定电压	Rated Voltage [V]	150	-	-			
额定电流	Rated Current [A]	5	-	-			
接线范围	Wire Range						
单/多芯线	Solid/Stranded [AWG]						
耐电压	Withstanding Voltage	1300V/1Min					
IEC 技术参数 IEC Technical Data							
过电压类别	Overvoltage Category	III	III	II			
污染等级	Contamination Class	3	2	2			
额定电压	Rated Voltage [V]	-	160	320			
额定电流	Rated Current [A]	-	6	6			
额定冲击电压	Impulse withstand voltagea [KV]	-	2.5	2.5			
导线截面积	Conductor cross section						
硬质/柔性导线	Solid/ flexible [mm <sup>2</sup> ]						
材料 Material							
绝缘材料	Insulation Material	PA66					
阻燃等级	Imflammability	UL94V-0					
导体材料	Contact Material	铜合金 Copper alloy					
导体表面镀层	Contactive Coating	镀锡 Tin Plated					
一般参数 Other Data							
间距	Pitch [mm]	2.54					
极数	Poles [P]	2x(02-24)					
剥线长度	Stripping Length [mm]	-					
螺丝	Screw/扭矩 Torque(Max) [N.m]	-					
工作温度	Operating temperatur [°C]	-40~+120					
引针尺寸	Pin Dimensions [mm]	2.60					
PCB板孔径	PCB Hole Diameter [mm]	1.40					

DES.	SJD	DATE	22.06.16
CHK.	BY	DATE	22.06.16
APP.	CLF	DATE	22.06.16

单位/UNITS	mm	尺寸/SIZE	A4	比例/SCALE	1:1
慈溪市科发电子有限公司 CIXI KEFA ELECTRONIC CO., LTD					

第三视角/THIRD ANGLE PROJECTION		版本/REV	A
		名称/TITLE	KF2EDGERM-2.54